



ZHEJIANG HAPPY PUMP INDUSTRY CO., LTD



Address: No. 318 West Xingpan Road, Daxi, Wenling, Zhejiang, China.

PC: 317525

Email: admin@happypump.com

Tel: +86-576-86305888

Fax: +86-576-86338978

[www.happypump.com](http://www.happypump.com)

Note: this directory all series of products, there may be errors between data and actual, please refer to our actual product.  
Are subject to change without prior notice.

Professional  
manufacturer of water pumps



Water Unlimited

2025

ZHEJIANG HAPPY PUMP  
INDUSTRY CO., LTD



# THE FOUNDATION OF LIFE

Zhejiang Happy Pump Industry Co.,Ltd  
www.happypump.com

01 DC  
50Hz / 60Hz



Household  
Booster pump

02 DC  
50Hz / 60Hz



Household  
Booster pump

03 HZB / HPBG / HYCS  
50Hz / 60Hz



Frequency constant  
Pressure self suction pump

04 VMP  
50Hz / 60Hz



Vibration pump

05 ZRS  
50Hz / 60Hz



Circulation pump

06 RS  
50Hz / 60Hz



Circulation pump

07 HRS  
50Hz / 60Hz



Circulation pump

09 ZQB  
50Hz



Submersible pump

10 CHM  
50Hz / 60Hz



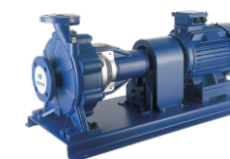
Centrifugal pump

11 QN/QM  
50Hz / 60Hz



Submersible motor

13 PS  
50Hz / 60Hz



End suction  
Centrifugal pump

17 PTD  
50Hz / 60Hz



Inline circulation pump

21 HPZ  
50Hz / 60Hz



Stainless steel  
Standard pump

22 MS  
50Hz / 60Hz



Centrifugal pump

23 CDL  
50Hz / 60Hz



Vertical  
Multi-stage pump

33 WQ(D)-S  
50Hz / 60Hz



Sewage  
Submersible pump



DC  
Household booster pump



Description

This product has a built-in intelligent water flow sensing moudle to realize automatic functions (the water pump will automatically work or stop when the faucet is opened or closed), but the water flow and water pressure in the water pipe must meet the automatic opening requirements (above 1.2L/min) , (the amount of water that can release two and a half bottles of mineral water in one minute), the machine can automatically start running. If it cannot start normally because the water flow pressure is too small to reach the starting flow rate (this is not a machine failure), you can use the manual function. Supercharge. Note: After using manual boost, you must turn off the manual switch and return to automatic gear.

This product cannot be used as a submersible pump and is prohibited from being placed in water to avoid damage to the machine. Special case reminder: In order to provide users with the best experience of using this product, without affecting the use effect, pls kindly understand that the performance and functions of this product may be changed without prior notice.

Button function: Short press to switch gears, and you can switch between working state and standby state;Press and hold for 3 seconds to enter forced manual mode (used when automatic cannot be used), and it will automatically switch to automatic mode after 30 minutes.

DC15-16	Power(V-A): DC24V-4.0A			Inlet/outlet (IN)	Packing dimension L×W×H (mm)
	Power(W)	Flow(L/min)	Head(m)		
1st Gear	45	25	12	3/4"	210×160×130
2nd Gear	60	30	16	3/4"	210×160×130

DC15-18	Power(V-A): DC24V-5.0A			Inlet/outlet (IN)	Packing dimension L×W×H (mm)
	Power(W)	Flow(L/min)	Head(m)		
1st Gear	50	25	12	3/4"	210×160×130
2nd Gear	70	30	15	3/4"	210×160×130
3rd Gear	85	35	18	3/4"	210×160×130

DC15-25	Power(V-A): DC36V-4.0A			Inlet/outlet (IN)	Packing dimension L×W×H (mm)
	Power(W)	Flow(L/min)	Head(m)		
1st Gear	60	30	15	3/4"	210×160×130
2nd Gear	85	35	20	3/4"	210×160×130
3rd Gear	100	40	25	3/4"	210×160×130

DC  
Household booster pump



Description

This product has a built-in intelligent water flow sensing moudle to realize automatic functions (the water pump will automatically work or stop when the faucet is opened or closed), but the water flow and water pressure in the water pipe must meet the automatic opening requirements (above 1.2L/min) , (the amount of water that can release two and a half bottles of mineral water in one minute), the machine can automatically start running. If it cannot start normally because the water flow pressure is too small to reach the starting flow rate (this is not a machine failure), you can use the manual function. Supercharge. Note: After using manual boost, you must turn off the manual switch and return to automatic gear.

This product cannot be used as a submersible pump and is prohibited from being placed in water to avoid damage to the machine. Special case reminder: In order to provide users with the best experience of using this product, without affecting the use effect, pls kindly understand that the performance and functions of this product may be changed without prior notice.

Button function: Short press to switch gears, and you can switch between working state and standby state;Press and hold for 3 seconds to enter forced manual mode (used when automatic cannot be used), and it will automatically switch to automatic mode after 30 minutes.

DC15-20	Power(V-A): DC24V-4.0A			Inlet/outlet (IN)	Packing dimension L×W×H (mm)
	Power(W)	Flow(L/min)	Head(m)		
1st Gear	50	25	12	3/4"	244×207×146
2nd Gear	75	30	16	3/4"	244×207×146
3rd Gear	90	35	20	3/4"	244×207×146

DC15-25	Power(V-A): DC24V-5.0A			Inlet/outlet (IN)	Packing dimension L×W×H (mm)
	Power(W)	Flow(L/min)	Head(m)		
1st Gear	60	30	15	3/4"	244×207×146
2nd Gear	85	35	20	3/4"	244×207×146
3rd Gear	100	45	25	3/4"	244×207×146

DC15-30	Power(V-A): DC36V-4.0A			Inlet/outlet (IN)	Packing dimension L×W×H (mm)
	Power(W)	Flow(L/min)	Head(m)		
1st Gear	60	30	15	3/4"	257×242×154
2nd Gear	95	35	22	3/4"	257×242×154
3rd Gear	130	45	30	3/4"	257×242×154

# HZB / HPBG / HYCS

## Frequency constant pressure self suction pump



HZB4.2-35

HZB5-45

MODEL	Power (W)	Max.flow (m³/h)	Max.head (m)	Inlet/outlet (IN)	Packing dimension L×W×H (mm)
HZB4-35	400	4.2	35	1"×1"	340×230×270
HZB5-50	600	5.0	50	1"×1"	435×255×330
HZB6-55	1000	6	55	1"×1"	435×255×330



HPBG4.5-30

HYCS-400

MODEL	Power (W)	Max.flow (m³/h)	Max.head (m)	Inlet/outlet (IN)	Packing dimension L×W×H (mm)
HPBG4-30	350	4	30	1"×1"	335×215×265
HPBG5-50	500	5	50	1"×1"	335×215×265

MODEL	Power (W)	Max.flow (m³/h)	Max.head (m)	Inlet/outlet (IN)	Packing dimension L×W×H (mm)
HYCS-400	400	3.8	45	1"×1"	360×220×305
HYCS-650	650	4.8	55	1"×1"	360×220×305

### Description

The permanent magnet variable frequency constant pressure water pump is mainly composed of five parts: a permanent magnet motor, a water pump, a seal, a cover, and a variable frequency controller. It is an intelligent household water pump that integrates power saving, constant voltage, and silence. Widely used in homes, villas, hair salons and other occasions, and also easy to install, making it your ideal new choice for domestic water use throughout the house.

### Description

The permanent magnet variable frequency constant pressure water pump is mainly composed of five parts: a permanent magnet motor, a water pump, a seal, a cover, and a variable frequency controller. It is an intelligent household water pump that integrates power saving, constant voltage, and silence. Widely used in homes, villas, hair salons and other occasions, and also easy to install, making it your ideal new choice for domestic water use throughout the house.

# VMP

## Vibration pump



VMP50

VMP60

MODEL	Power (W)	Max.flow (L/Min)	Max.head (m)	Max.Depth (m)	Inlet/outlet (IN)	Packing dimension (mm)
VMP50	180	15	40	5	1/2"	295×115×145
VMP60	280	18	60	5	1/2"	295×115×155



VMP60-1

VMP60-2

MODEL	Power (W)	Max.flow (L/Min)	Max.head (m)	Max.Depth (m)	Inlet/outlet (IN)	Packing dimension (mm)
VMP60-1	280	18	60	5	1/2"	295×115×155
VMP60-2	280	18	60	5	1/2"	295×115×155

### Working Condition

- ※ For clean water.PH: 6.5-8.5
- ※ Solid impurity no more than 0.1%
- ※ Fluid temperature: 0-40℃
- ※ Maximum ambient temperature: +40℃

### Motor

- ※ Degree of protection: IPX8
- ※ Insulation class: F
- ※ Continuous operation

### Working Condition

- ※ For clean water.PH: 6.5-8.5
- ※ Solid impurity no more than 0.1%
- ※ Fluid temperature: 0-40℃
- ※ Maximum ambient temperature: +40℃

### Motor

- ※ Degree of protection: IPX8
- ※ Insulation class: F
- ※ Continuous operation



# ZRS

## Circulation pump



ZRS15/9



ZRS20/15

### Technical Data

**Suitable fluids**  
Heating water to VD 12035  
Heating water  
Water/glycol mixtures max.mixing ratio 1:1

**Performance**  
Fluid temprature range -10°C-+90°C  
Max.working pressure 6bar

**Ambient Temperature**  
Permissible up to 40°C

**Power**  
Mains power 1-230v,50Hz

**Motor**  
Degree of protection IP44  
Insulation class F

**Construction Materials**  
Pump body cast iron  
Impeller PP  
Shaft Ceramic  
Bearings Ceramic

### Mounting Positions

Pump shaft in the horizontal plane

### Pump Equipment

Screwed end single head pump  
Flow switch automatically control  
Non-overloading single phase motor  
cast iron body 180mm port-to-port

MODEL	Power (W)	Max.flow (L/Min)	Max.head (m)	Inlet/outlet (IN)	Packing dimension (mm)
ZRS15/9-160	125	25	9	3/4"	370×245×290
ZRS15/11-160	145	30	11	3/4"	370×245×330

MODEL	Power (W)	Max.flow (L/Min)	Max.head (m)	Inlet/outlet (IN)	Packing dimension (mm)
ZRS20/12-195	300	62	12	1"	450×350×170
ZRS20/15-200	400	75	15	1"	430×290×195

# RS

## Circulation pump



RS32/4



RS25/6

### Technical Data

**Suitable fluids**  
Heating water to VD 12035  
Heating water  
Water/glycol mixtures max.mixing ratio 1:1

**Performance**  
Fluid temprature range -10°C-+110°C  
Max.working pressure 10bar

**Ambient Temperature**  
Permissible up to 40°C

**Power**  
Mains power 1-230v,50Hz

**Motor**  
Degree of protection IP44  
Insulation class F

**Construction Materials**  
Pump body cast iron  
Impeller PP  
Shaft Ceramic  
Bearings Ceramic

MODEL	Power (W)	Max.flow (L/Min)	Max.head (m)	Inlet/outlet (IN)	Packing dimension (mm)
RS15/4	85/55/35	25/28/17	4.5/4/3	3/4"	310×280×288
RS20/4	85/55/35	35/33/22	4.5/4/3	1"	310×280×288
RS25/4	85/55/35	50/35/25	4.5/4/2	1 1/2"	404×280×300
RS32/4	85/55/35	55/30/12	4.5/4/2	2"	404×280×300

MODEL	Power (W)	Max.flow (L/Min)	Max.head (m)	Inlet/outlet (IN)	Packing dimension (mm)
RS15/6	100/65/45	30/21/14	5.7/4.5/2.8	3/4"	310×280×288
RS20/6	100/65/45	40/26/19	6/5/3	1"	310×280×288
RS25/6	100/65/45	55/37/20	6/5/3	1 1/2"	404×280×300
RS32/6	100/65/45	60/42/25	6/5/3	2"	404×280×300

MODEL	Power (W)	Max.flow (L/Min)	Max.head (m)	Inlet/outlet (IN)	Packing dimension (mm)
RS25/7	125/105/82	70/65/45	6.7/6.2/5.2	1 1/2"	420×280×320
RS32/7	125/105/82	75/67/50	6.7/6.2/5.2	2"	420×280×320

MODEL	Power (W)	Max.flow (L/Min)	Max.head (m)	Inlet/outlet (IN)	Packing dimension (mm)
RS25/8	245/210/140	125/83/50	8/6.5/4	1 1/2"	420×305×202
RS32/8	245/210/140	183/125/67	8/6.5/4	2"	420×305×202

MODEL	Power (W)	Max.flow (L/Min)	Max.head (m)	Inlet/outlet (IN)	Packing dimension (mm)
RS20/12	285/220/145	60/32/22	12/11/7	1"	440×295×185
RS25/12	285/210/130	70/42/22	12/11/7	1 1/2"	430×340×180

HRS  
Circulation pump



Working conditions

- ※ Rated voltage of power supply is 220V and frequency is 50Hz single-phase AC.
- ※ Pressure of syste≤1.0MPa.
- ※ Transmitted liquid should not include solid impurity the volume of which ratio exceeds 0.1% or the size of which is more than 0.2mm
- ※ The lowest liquid temperature .....2℃
- ※ The highest liquid temperature...110℃
- ※ The lowest environment temperature.....2℃
- ※ The highest environment temperature.....40℃

The feature and use of circulating pump

HRS series of circulating pump researched and developed by technique staff of our company has following merits: no leakage low noise environmental protection, beautiful appearance, convenient installation, run responsible and so on, it is designed specially for heating system and it can be used to supply water and add pressure for mansions of city, villa of suburb, house, to match industrial equipment, to supply water in cycle for cool air-condition, boiler and solar energy supply hot water and keep warm in cycle, etc.



370W



550W

MODEL	Power (W)	Voltage (V)	Frequency (Hz)	Max.flow (L/Min)	Max.head (m)	Inlet/outlet (IN)	Packing dimension (mm)
HRS370W	370	220	50	130	10	1½"	258×198×285
HRS550W	550	220	50	190	13	1½"	258×198×285
HRS750W	750	220	50	240	13	1½"	285×227×321
HRS1100W	1100	220	50	230	18	1½"/ 2"	285×227×321
HRS1500W	1500	220	50	310	15	1½"/ 2"	315×232×348



THE  
FOUNDATION  
OF LIFE

Zhejiang Happy Pump Industry Co.,Ltd  
www.happypump.com



# ZQB

Submersible pump



Description

The main components of this pump motor are powered by a stainless steel DC motor, equipped with complete electrical protection devices and special waterproof seals, and made of high-quality engineering plastics and stainless steel materials. Achieve the goals of low power consumption, high flow rate, and corrosion resistance. The whole machine has a compact, novel, advanced, lightweight and durable structure, and is easy to maintain.



ZQB



ZQB-12

MODEL	Power (W)	Voltage (V)	Max.flow (m³/h)	Max.head (m)	Inlet/outlet (IN)
ZQB	50	12/24	4.5	3-5	1"

MODEL	Power (W)	Voltage (V)	Max.flow (m³/h)	Max.head (m)	Inlet/outlet (IN)
ZQB-12	180	12	3	18	1"
ZQB-12	180	24	3	18	1"
ZQB-12	240	48	3	18	1"
ZQB-12	260	60	3	22	1"
ZQB-12	280	72	3	18	1"

# CHM

Frequency multi-stage centrifugal pump



Description

CHM series is an intelligent stainless steel multistage centrifugal pump, controlled by a PCL microcomputer chip, mainly used for pressurization, household water supply, and automatic watering, with the feature of delay-start protection, automatic start and stop, and no water protection. Can be used to transfer clean water or other liquids similar to water in physical and chemical properties.



MODEL	Power (W)	Max.flow (m³/h)	Max.head (m)	Inlet/outlet (IN)	Packing dimension L×W×H (mm)
CHM400	400	4.4	35	1"×1"	520×190×290
CHM700	700	6.6	50	1"×1"	520×190×290
CHM900	900	7	70	1"×1"	520×190×290

# QN/QM

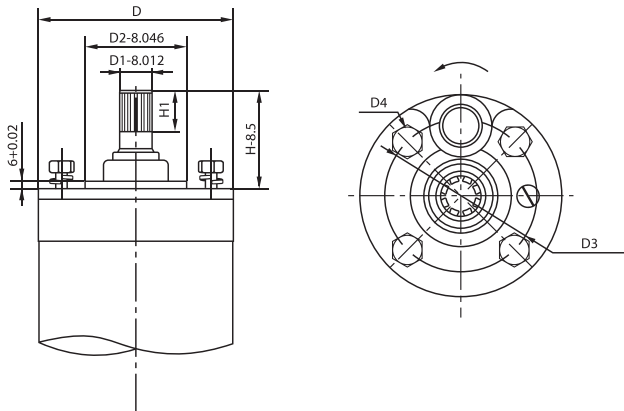
## Submersible motor



### Description

QN/QM6(8) NEMA standard seandard series submersible motor  
Technical data of QN /QM6(8) series submersible motor  
(380/660V/50Hz/3-phase)

QN/QM10 international general standard series submersible motor  
Technical data of QN/QM10 series submersible motor  
(380/660V/ 50Hz/3-phase)



TYPE	QN/QM6"-3-45KW	QN/QM8"-5.5-55KW	QN/QM8"-64-110KW	QN/QM10"-30-75KW	QN/QM10"-90-185KW
D	Φ143mm	Φ184mm	Φ192mm	Φ236mm	Φ236mm
D1	Φ25.2mm	Φ37.7mm	Φ37.7mm	Φ38mm	Φ50mm
D2	Φ76.2mm	Φ127mm	Φ127mm	Φ127mm	Φ127mm
D3	Φ111.1mm	Φ152.4mm	Φ152.4mm	Φ190.5mm	Φ190.5mm
D4	M12	Φ17.5mm	Φ17.5mm	Φ21mm	Φ21mm
H	73mm	101.6mm	101.6mm	101.6mm	101.6mm
H1	23mm	43mm	43mm	62mm	80mm

### QN/QM SUBMERSIBLE MOTOR TECHNICAL DATA

MODEL	Power		Rated ampere(A)		Power factor	Speed	Starting ampere
	kW	HP	380V	660V		R/min	Rated ampere
QNS/QM6-3	3	4	7.8		0.79	2920	7
QNS/QM6-4	4	5.5	10		0.8	2920	7
QNS/QM6-5.5	5.5	7.5	13.6		0.8	2930	7
QNS/QM6-7.5	7.5	10	18		0.81	2930	7
QNS/QM6-9.2	9.2	12.5	21.9	12.6	0.82	2930	7
QNS/QM6-11	11	15	25.8	14.9	0.82	2930	7
QNS/QM6-13	13	17.5	30.5	17.6	0.82	2930	7
QNS/QM6-15	15	20	35	20.1	0.82	2930	7
QNS/QM6-18.5	18.5	25	43.1	24.8	0.82	2930	7
QNS/QM6-22	22	30	51.3	29.5	0.82	2850	7
QNS/QM6-25	25	35	57.6	33.1	0.83	2850	7
QNS/QM6-30	30	40	68.6	39.5	0.83	2850	7
QNS/QM6-37	37	50	84.7	48.7	0.83	2850	7
QNS/QM6-45	45	60	103	59	0.83	2850	6.5

### QN/QM SUBMERSIBLE MOTOR TECHNICAL DATA

MODEL	Power		Rated ampere(A)		Power factor	Speed	Starting ampere
	kW	HP	380V	660V		R/min	Rated ampere
QNS/QM8-5.5	5.5	7.5	13.2	7.6	0.81	2880	7
QNS/QM8-7.5	7.5	10	18	10.4	0.81	2880	7
QNS/QM8-9.2	9.2	12.5	21.6	12.4	0.82	2870	7
QNS/QM8-11	11	15	25.5	14.7	0.82	2850	7
QNS/QM8-15	15	20	33.9	19.5	0.83	2850	7
QNS/QM8-18.5	18.5	25	41.6	23.9	0.83	2850	7
QNS/QM8-22	22	30	48.5	27.9	0.84	2850	7
QNS/QM8-25	25	35	54.5	31.4	0.84	2850	7
QNS/QM8-30	30	40	65	38	0.84	2850	7
QNS/QM8-37	37	50	80	46	0.84	2850	7
QNS/QM8-45	45	60	96	55	0.84	2850	6.5
QNS/QM8-55	55	75	118	68	0.84	2850	6.5
QNS/QM8-64	64	90	137	79	0.84	2840	6.5
QNS/QM8-75	75	100	161	92	0.84	2840	6.5
QNS/QM8-90	90	120	192	110	0.84	2840	6.5
QNS/QM8-100	100	135	213	123	0.84	2840	6.5
QNS/QM8-110	110	150	234	135	0.84	2840	6.5

### QN/QM SUBMERSIBLE MOTOR TECHNICAL DATA

MODEL	Power		Rated ampere(A)		Power factor	Speed	Starting ampere
	kW	HP	380V	660V		R/min	Rated ampere
QNS/QM10-30	30	40	65	37	0.84	2860	7
QNS/QM10-37	37	50	78	45	0.85	2860	7
QNS/QM10-45	45	60	94	54	0.85	2860	6.5
QNS/QM10-55	55	75	114	66	0.85	2860	6.5
QNS/QM10-64	64	90	133	77	0.85	2860	6.5
QNS/QM10-75	75	100	154	89	0.86	2860	6.5
QNS/QM10-90	90	125	183	105	0.86	2860	6.5
QNS/QM10-100	100	135	203	117	0.86	2860	6.5
QNS/QM10-110	110	150	221	127	0.87	2860	6.5
QNS/QM10-120	120	160	241	139	0.87	2860	6.5
QNS/QM10-132	132	180	265	153	0.87	2860	6.5
QNS/QM10-140	140	190	281	162	0.87	2860	6.5
QNS/QM10-150	150	200	301	173	0.87	2860	6.5
QNS/QM10-160	160	215	321	185	0.87	2860	6.5
QNS/QM10-185	185	250	371	214	0.87	2860	6.5

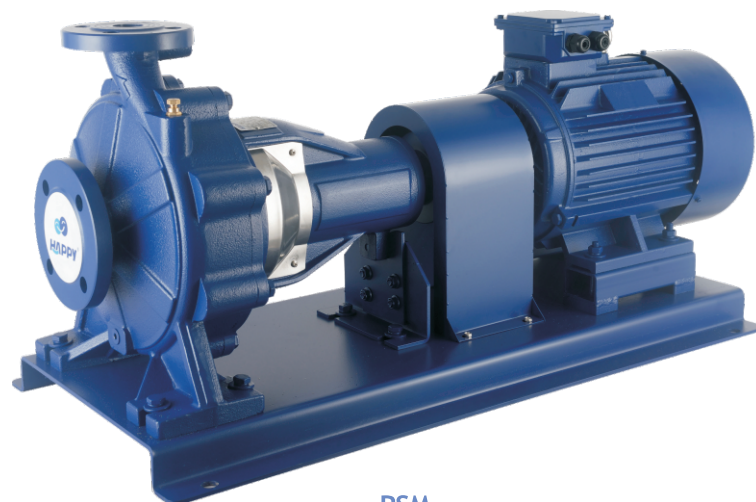


PS

## End suction centrifugal pump



PS



PSM

For example

PS (PSM) 50 - 250 / 220

$$220 = \text{Rated power (kw)} \times 10$$

250=Nominal impeller size(mm)  
250H=High flow type

50=Discharge(mm)

PSM=End suction pump with motor&base  
PSBM=End suction pump with motor&base  
(in type B bearing house)

PS=End suction pump only  
PSB=End suction pump only  
(in type B bearing house)

### Description

- ※ Complete range with a full series of end suction pumps
- ※ Outstanding reliability for operation in any application
- ※ YE3 high efficient motor, with protection IP55 class F
- ※ Pump case with anti-corrosive coating
- ※ Customize casting logo on the bearing house as request
- ※ Quality NSK bearing, wear resistance mechanical seal

## Using Limits

- ※ Liquid temperature between -10°C and +120°C
- ※ Ambient temperature between -10°C and +50°C
- ※ Max. working pressure 20 bar
- ※ Continuous service S1

## Applications

The impressive range end-suction pumps is compatible with an array of application areas, including water intake, heating, industrial pressure boosting, industrial liquid transfer, air-conditioning, district cooling, irrigation, fire fighting and many more.

## TECHNICAL DATA

50Hz n=2900 1/min

MODEL	DN (mm)	POWER		H	Q=DELIVERY																				
					US gpm	0	26	40	66	79	106	119	159	185	211	238	317	370	396	476	529	608	793	925	
		Q(m³/h)	0		6	9	15	18	24	27	36	42	48	54	72	84	90	108	120	138	180	210			
		Q(l/min)	0		100	150	250	300	400	450	600	700	800	900	1200	1400	1500	1800	2000	2300	3000	3500			
PS 32-160/15	50×32	1.5	2	H	25.4	23.7	22.5	18.5	15.8																
PS 32-160/22	50×32	2.2	3		31	29.6	28.5	24.5	22	15															
PS 32-160/30	50×32	3	4		35	34.3	32.5	28	25.5	19	15														
PS 32-200/30	50×32	3	4		44.2	42	39.8	35.2	32.2	24.6	19.8														
PS 32-200/40	50×32	4	5.5		54.5	52	50	45.5	42.3	35	30.3														
PS 32-250/55	50×32	5.5	7.5		60	59.5	59	55	50.2	34.5															
PS 32-250/75	50×32	7.5	10		69.5	69	68.5	66	63	53															
PS 32-250/92	50×32	9.2	12.5		75	75	74.5	72	69	59															
PS 32-250/110	50×32	11	15		90	89.5	88	82	78	66															
PS 32-250/150	50×32	15	20		97	96.5	96	90	86	73															
PS 40-160/30	65×40	3	4		31.8				29.5	27.5	26.3	21.5	17.5												
PS 40-160/40	65×40	4	5.5		38				36	34	33	28.5	25	20.1											
PS 40-200/55	65×40	5.5	7.5		46				43.8	41.3	40.1	35	30												
PS 40-200/75	65×40	7.5	10		57				53.6	51.5	50	45	41	36.5											
PS 40-250/92	65×40	9.2	12.5		64				59	56.5	55	49.5	45	39.8											
PS 40-250/110	65×40	11	15		72				67.5	65	63.5	57.5	52.2	47											
PS 40-250/150	65×40	15	20		84.5				79.3	77.3	75.2	70	66	61											
PS 40-250/185	65×40	18.5	25		90				85.5	82.8	80.7	75.8	70.5	66.5											
PS 40-315/185	65×40	18.5	25		95				95	93	92.5	87	81												
PS 40-315/220	65×40	22	30		106				106	104	103.5	98	92												
PS 40-315/300	65×40	30	40		120				120	118	117	115	112												
PS 40-315/370	65×40	37	50		144				144	143	142	141	140	132											
PS 50-125/22	65×50	2.2	3		17							15.4	14	12.8	11.5	6.5									
PS 50-125/30	65×50	3	4		20							18.8	18	17	15.6	11									
PS 50-125/40	65×50	4	5.5		24							23.1	23	21.5	20.3	15.8	11.8								
PS 50-160/55	65×50	5.5	7.5		32							30.6	30	28	26.6	20.5	14.8								
PS 50-160/75	65×50	7.5	10		40							38	37	36	34.4	29	24	21							
PS 50-200/92	65×50	9.2	12.5		50.5							46.8	45	43	40.9	32.5	26.7								
PS 50-200/110	65×50	11	15		57.5							53.5	52	50	47.5	40	34	29							
PS 50-200/150	65×50	15	20		62							58	56.5	54.5	52	44.5	39	35.5							
PS 50-250/150	65×50	15	20		68.5							64	63	61.5	59	50	41								
PS 50-250/185	65×50	18.5	25		79							75.8	74.8	74	71.5	63.5	55.5	47							
PS 50-250/220	65×50	22	30		89.5							86	85.3	84	81.5	73.5	63.5	57							
PS 50-250/300	65×50	30	40		95.5							92	91.3	90	87.5	79.5	70	63							
PS 50-315/300	65×50	30	40		97							94	92	90.5	88	80	72								
PS 50-315/370	65×50	37	50		114							111	109	107.5	105	97	89	84							
PS 50-315/450	65×50	45	60		132							129	127	125.5	123	115	107	102							
PS 50-315/550	65×50	55	75		146							143	141	139.5	137	129	121	116							
PS 50-315/750	65×50	75	100		164							161	159	157.5	155	147	139	134							
PS 65-125/40	80×65	4	5.5		19									17.3	16.8	14.5	13	11.8							
PS 65-125/55	80×65	5.5	7.5	23										21.3	20.9	19	17.5	16.7	13.7						
PS 65-125/75	80×65	7.5	10	27										26	25.6	24.5	23	22.5	20	18					
PS 65-160/92	80×65	9.2	12.5	33											31.5	30	28	27.1	24	21.5					
PS 65-160/110	80×65	11	15	36											34.5	33	31.5	30.8	28	25.5					
PS 65-160/150	80×65	15	20	42											41	40	38.5	37.8	35	33	29.5				
PS 65-200/150	80×65	15	20	45											45.5	43	41	40.2	36.5	34					
PS 65-200/185	80×65	18.5	25	52											52.3	51	49	48.2	44.5	42					
PS 65-200/220	80×65	22	30	59											59.5	58	56	55	52	49.5	44.5				
PS 65-250/220	80×65	22	30	64.8											64.7	62	60	58.5	53	50					
PS 65-250/300	80×65	30	40	80											79.8	77.5	75.5	74.5	70	66	58				
PS 65-250/370	80×65	37	50	92											90.5	88.5	87	85	80.5	78	68				
PS 65-315/450	80×65	45	60	102											99.2	97	95	94.5	92.4	90	83				
PS 65-315/550	80×65	55	75	122												119.2	117.4	115.7	114.5	112.5	110	103	76		
PS 65-315/750	80×65	75	100	141												139.8	137.3	135.6	134.5	132.5	130	122	96	65.5	
PS 65-315/900	80×65	90	125	151													149.8	147.3	145.6	144.5	142.5	140	132	106	75.5
PS 80-125/40	100×80	4	5.5	17										16.5	15.9	14.3	13.5	11.6	10	7.5					
PS 80-125/55	100×80	5.5	7.5	21											20.5	20	19	18	16.5	15	12.5	9.5			
PS 80-125/75	100×80	7.5	10	26												25	25	24.5	23.8	22.5	21.5	19.5	16.5		

PSM also available

PS

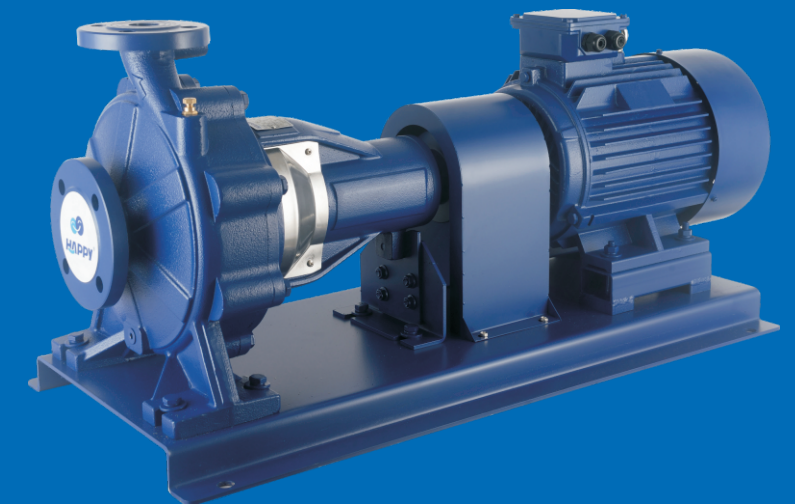


## TECHNICAL DATA

50Hz n=2900 1/min

MODEL	DN (mm)	POWER		Q=DELIVERY																			
				us gpm	0	264	396	529	634	793	881	925	969	1057	1233	1322	1586	1762	2203	2643	2907	3524	4405
		Q(m³/h)	0	60	90	120	144	180	200	210	220	240	280	300	360	400	500	600	660	800	1000		
		Q(l/min)	0	1000	1500	200	2400	3000	3333	3500	3667	4000	4667	5000	6000	6667	8333	10000	11000	13333	16667		
PS 80-160/110	100×80	11	15	H	28	27	27.3	24.5	21.1	16													
PS 80-160/150	100×80	15	20		34	32.6	32.5	30.2	27	22.1	18.5	16.7											
PS 80-160/185	100×80	18.5	25		39	38.5	38	36.7	33.6	28.8	25.3	23.5											
PS 80-160/220	100×80	22	30		44	43.5	43	41.7	38.6	33.8	30.3	28.5											
PS 80-200/220	100×80	22	30		48	47.7	47.5	43.5	39.2	32.5	27.2	24.5											
PS 80-200/300	100×80	30	40		60	59.7	59.5	57	53.1	47	42.7	40.5											
PS 80-250/370	100×80	37	50		71.5	70.9	70.5	65.5	59.3	51	43.2	38.5											
PS 80-250/450	100×80	45	60		88	86.7	86	83.6	78.5	70.5	60	51											
PS 80-250/550	100×80	55	75		94.5	94.5	94.5	91.8	87	79.5	72.1	68.3											
PS 80-250/750	100×80	75	100		108.5	108.5	108.5	105.8	101	93.5	86.1	82.3											
PS 80-315/450	100×80	45	60		85	84	82.6	82	78	68.3	61	56											
PS 80-315/550	100×80	55	75		98	97	95.6	95	91	81.3	74	69											
PS 80-315/750	100×80	75	100		124	123	121.6	121	117	107.3	100	95	90	80.8									
PS 80-315/900	100×80	90	125		144	143	141.6	141	137	127.3	120	115	110	100.8									
PS 80-315/1100	100×80	110	150		153	152	150.6	150	146	136.3	129	124	119	109.8									
PS 100-160/150	125×100	15	20		35	33.5	32.5	30	27.8	24.5	21.5	20	18.3	15									
PS 100-160/185	125×100	18.5	25		38.5	37.5	36.5	34.3	32.2	29	25.7	24	22	18									
PS 100-160/220	125×100	22	30		43	41	40	37.6	35.2	31.5	28.5	27	25.3	22									
PS 100-200/220	125×100	22	30		38.5	36.7	35.7	33.8	31.7	28.5	26.8	26	25	22.9	16.3	13							
PS 100-200/300	125×100	30	40		44.5	42.5	42	40.2	38.8	36.7	34.2	33	31.7	29	21.7	18							
PS 100-200/370	125×100	37	50		55	53	51	50.6	49.2	47	45	44	42.8	40.5	32.8	29							
PS 100-200/450	125×100	45	60		61	59	57	56.6	55.2	53	51	50	48.8	46.5	38.8	35							
PS 100-250/450	125×100	45	60		65	65	64	63	61	58	56	55	53.3	50	39	33.5							
PS 100-250/550	125×100	55	75		77	76	75.5	75	73.8	72	71.7	71.5	70.7	69	62.3	59							
PS 100-250/750	125×100	75	100		91	91	90.5	89.7	88	85.5	84	83.3	81.5	78	71.7	68.5	48						
PS 100-250/900	125×100	90	125		100	100	99.5	98.7	97	94.5	93	92.3	90.5	87	80.7	77.5	57						
PS 100-315/750	125×100	75	100		80			78.5	76.7	74	73	72.8	72.5	70.7	68	64	52						
PS 100-315/900	125×100	90	125		100			98.5	96.7	94	93	92.8	92.5	90.7	88	84	72						
PS 100-315/1100	125×100	110	150		118			116.5	114.7	112	111	110.8	110.5	108.7	106	102	90						
PS 100-315/1320	125×100	132	180		129			127.5	125.7	123	122	121.8	121.5	119.7	117	112	101						
PS 100-315/1600	125×100	160	220		148			146.5	144.7	142	141	140.8	140.5	138.7	136	132	120						
PS 125-200/450	150×125	45	60		39.8			39.3	39.2	39	38.9	38.9	38.8	37.5	35	34	28.6	25					
PS 125-200/550	150×125	55	75		50.5			49.3	49.2	49	48.9	48.9	48.8	47.5	45	44	38.6	35					
PS 125-200/750	150×125	75	100		61.5			60.3	60.2	60	59.9	59.9	59.8	58.5	56	55	49.6	45					
PS 125-250/550	150×125	55	75		70			67	66	64	63	62	61	59.5	54	50.5							
PS 125-250/750	150×125	75	100		80			76.5	75.5	74	73	72	71.5	70	67	65	56						
PS 125-250/900	150×125	90	125		87			84	82.5	81	79.5	79	78	77	73.5	71.5	65	60					
PS 125-250/1100	150×125	110	150		97			94	92.8	91	90	89.3	88.7	87.4	84	83.5	76	71					
PS 125-250H/900	150×125	90	125		63.2			62.4	62	61.6	61.2	61.2	61.2	60.8	60	59.6	57.2	55.2	47.2				
PS 125-250H/1100	150×125	110	150		74			73.2	72.8	72.4	72	72	72	71.6	70.8	70.4	68	66	58	49.6			
PS 125-250H/1320	150×125	132	180	84			83.2	82.8	82.4	82	82	82	81.6	80.8	80.4	78	76	68	59.6				
PS 125-250H/1600	150×125	160	220	98			97.2	96.8	96.4	96	96	96	95.6	94.8	94.4	92	90	82	73.6	67.6			
PS 125-315/1320	150×125	132	180	96						95.2	95.1	95	94.8	94	93.5	91.8	88.5	76					
PS 125-315/1600	150×125	160	220	112						111.2	111.1	111	110.8	110	109.5	107.8	106	97.5	80				
PS 125-315/1850	150×125	185	250	125						124.2	124.1	124	123.8	123	122.5	120.8	119	109	90				
PS 125-315/2000	150×125	200	270	136						135.2	135.1	135	134.8	134	133.5	131.8	130	120	101				
PS 150-200/750	200×150	75	100	50								48	47.9	47.6	47.2	45.8	44.6	41	35.5	30.5			
PS 150-200/900	200×150	90	125	56								54	53.9	53.6	53.2	52.7	52.4	48	42.8	39.2	30		
PS 150-200/1100	200×150	110	150	65.2								62	61.7	61.2	60.8	59.8	59.2	57.2	54	51.6	42		
PS 150-200/1320	200×150	132	180	71								68.5	67.7	67.2	66.8	65.8	65.2	63.2	60	57.6	48		
PS 150-200/1600	200×150	160	220	77								74	74	73.2	72.8	71.8	71.2	69.2	66	63.6	54		
PS 150-250/1100	200×150	110	150	67											63	61.7	60	55.8	51.8	48	37.8		
PS 150-250/1320	200×150	132	180	80.2											78	76.3	73.5	70	65	62	53		
PS 150-250/1600	200×150	160	220	90											88	86	85	82	77.2	75	66		
PS 150-250/2000	200×150	200	270	100											97	96	95	92	87.2	85	76		
PS 150-315/1850	200×150	185	250	92											90	88.3	87.2	82.8	77.8	72	60		
PS 150-315/2500	200×150	250	340	111											110	108	106	102	96	92	81		
PS 150-315/2800	200×150	280	380	124											121	119	118	114	109	105	94		
PS 150-315/3150	200×150	315	430	135											131	133	132	128	122	118	106		

PSM also available



# THE FOUNDATION OF LIFE

**Zhejiang Happy Pump Industry Co.,Ltd**  
**www.happypump.com**



PTD  
Inline circulation pump

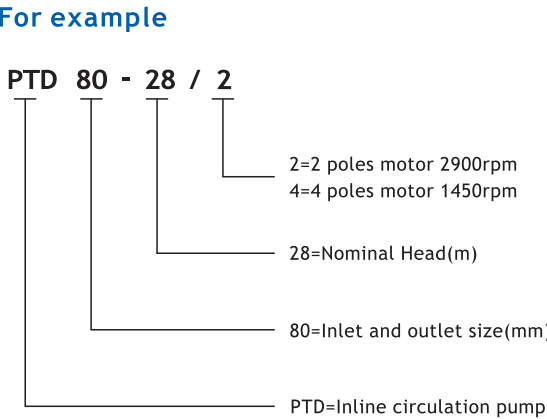


- Description**
- ※ Single-stage centrifugal pumps in inline design
  - ※ With high temperature seal for using in heating systems
  - ※ Easily back pull-out from motor for coupling design
  - ※ YE3 high efficient motor, with protection IP55 class F
  - ※ Pump case with anti-corrosive coating
  - ※ Shaft in stainless steel AISI 304
  - ※ Quality NSK bearing, wear resistance mechanical seal

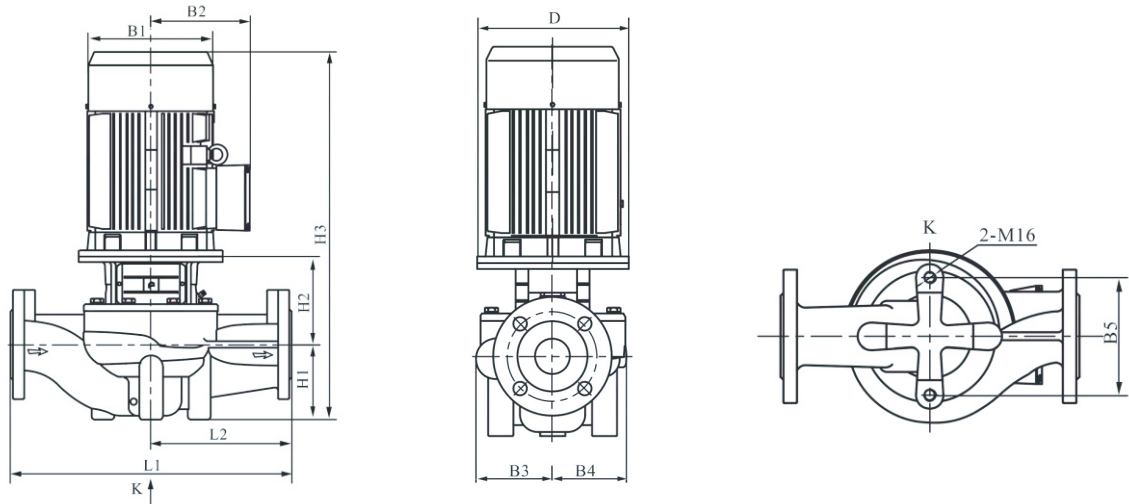
- Using Limits**
- ※ Liquid temperature between -10°C and +120°C
  - ※ Ambient temperature between -10°C and +50°C
  - ※ Max. working pressure 16 bar/Continuous S1



PTD



DIMENSIONS AND WEIGHT



DIMENSIONS AND WEIGHT

MODEL	Q (m³/h)	H (m)	P (kW)	RPM	DIMENSIONS(mm)											KG
					D	B1	B2	B3	B4	B5	H1	H2	H3	L1	L2	
PTD32-18/2	8	18	1.1	3000	120	170	142	125	117	144	100	166	511	340	170	50
PTD32-21/2	12.5	21	1.5	3000	140	190	155	125	117	144	100	166	556	340	170	56
PTD32-25/2	12.5	25	2.2	3000	140	190	155	125	117	144	100	166	556	340	170	59
PTD32-32/2	12.5	32	3	3000	160	197	165	125	117	144	100	185	630	340	170	68
PTD32-38/2	12.5	38	4	3000	160	230	188	144	144	144	100	185	640	440	220	79
PTD32-50/2	12.5	50	5.5	3000	220	260	208	144	144	144	100	213	703	440	220	104
PTD40-16/2	12.5	16	1.1	3000	120	170	142	97	96	120	68	150	463	320	160	40
PTD40-20/2	12.5	20	1.5	3000	140	190	155	97	96	120	68	160	518	320	160	46
PTD40-18/2	20	18	2.2	3000	140	190	155	110	95	144	100	167	557	340	170	53
PTD40-25/2	20	25	3	3000	160	197	165	127	115	144	100	185	630	340	170	70
PTD40-30/2	25	30	4	3000	160	230	188	127	115	144	100	185	540	340	170	77
PTD40-36/2	25	36	5.5	3000	200	260	208	138	125	144	110	213	713	440	220	106
PTD40-48/2	25	48	7.5	3000	200	260	208	138	125	144	110	213	713	440	220	110
PTD50-12/2	16	12	1.1	3000	120	170	142	117	115	144	115	153	513	340	170	56
PTD50-15/2	20	15	1.5	3000	140	190	155	117	115	144	115	153	558	340	170	62
PTD50-18/2	25	18	2.2	3000	140	190	155	117	115	144	115	153	558	340	170	55
PTD50-24/2	25	24	3	3000	160	197	165	117	115	144	115	172	632	340	170	74
PTD50-28/2	30	28	4	3000	160	230	188	129	115	144	115	175	645	340	170	79
PTD50-32/2	12.5	32	3	3000	160	197	165	128	128	144	105	162	612	400	200	65
PTD50-35/2	30	35	5.5	3000	200	260	208	129	115	144	115	197	702	340	170	103
PTD50-38/2	12.5	38	4	3000	100	230	188	128	128	144	105	162	622	400	200	71
PTD50-40/2	35	40	7.5	3000	200	260	208	171	158	144	115	187	692	440	220	118
PTD50-48/2	12.5	48	5.5	3000	200	260	208	128	128	144	105	186	681	400	200	85
PTD50-50/2	40	50	11	3000	350	330	255	171	158	144	115	150	865	440	220	181
PTD50-58/2	12.5	58	7.5	3000	200	260	208	163	163	144	105	196	691	440	220	110
PTD50-60/2	50	60	15	3000	350	330	255	171	158	144	115	250	865	440	220	191
PTD50-70/2	50	70	18.5	3000	350	330	255	171	158	144	115	250	915	440	220	209
PTD50-80/2	12.5	80	11	3000	350	330	255	163	163	144	105	196	801	440	220	185
PTD50-81/2	50	81	22	3000	350	360	285	171	158	144	115	250	940	440	220	245
PTD65-15/2	30	15	2.2	3000	140	190	155	142	124	144	105	172	567	360	180	65
PTD65-19/2	30	19	3	3000	160	197	165	142	124	144	105	191	641	360	180	74
PTD65-22/2	40	22	4	3000	160	230	188	142	124	144	105	191	651	360	180	81
PTD65-30/2	40	30	5.5	3000	200	260	208	142	124	144	105	213	708	360	180	105
PTD65-34/2	50	34	7.5	3000	200	260	208	142	124	144	105	213	708	360	180	108
PTD65-36/2	25	36	5.5	3000	200	260	208	128	128	144	105	194	689	400	200	87
PTD65-40/2	50	40	11	3000	350	330	255	179	167	144	125	262	887	470	238	183
PTD65-48/2	25	48	7.5	3000	200	260	208	128	128	144	105	194	689	400	200	91
PTD65-50/2	50	50	15	3000	350	330	255	179	167	144	125	262	887	475	238	193
PTD65-61/2	50	61	18.5	3000	350	330	255	179	167	144	125	262	937	475	238	210
PTD65-67/2	50	67	22	3000	350	330	255	179	167	144	125	262	962	475	238	248
PTD65-83/2	50	83	30	3000	400	400	310	142	167	144	125	262	1037	475	238	309
PTD80-13/2	50	13	3	3000	160	197	165	142	124	160	97	219	661	450	225	84
PTD80-18/2	50	18	4	3000	160	230	188	142	124	160	97	219	671	450	225	91
PTD80-22/2	50	22	5.5	3000	200	260	208	142	124	160	97	241	728	450	225	114
PTD80-28/2	50	28	7.5	3000	200	260	208	142	124	160	97	241	728	450	225	117
PTD80-30/2	80	30	11	3000	350	330	255	182	163	144	115	279	894	500	250	194
PTD80-38/2	80	38	15	3000	350	330	255	182	163	144	115	279	897	500	250	204
PTD80-40/2	50	40	11	3000	350	330	255	137	128	144	115	240	855	500	250	170
PTD80-47/2	80	47	18.5	3000	350	330	255	182	163	144	115	279	944	500	250	222
PTD80-48/2	50	48	15	3000	350	330	255	137	128	144	115	240	855	500	250	181
PTD80-54/2	80	54	22	3000	350	330	255	182	163	144	115	279	969	500	250	258
PTD80-67/2	80	67	30	3000	400	400	310	182	163	144	115	279	1044	500	250	319
PTD100-9/2	50	9	2.2	3000	140	175	155	134	101	160	105	178	573	450	225	65
PTD100-15/2	60	15	4	3000	160	215	190	134	101	160	105	190	650	450	225	83
PTD100-17/2	80	17	5.5	3000	200	260	205	150	117	144	140	215	745	500	250	119
PTD100-22/2	80	22	7.5	3000	200	260	205	150	117	144	140	215	745	500	250	122

DIMENSIONS AND WEIGHT

MODEL	Q (m³/h)	H (m)	P (kW)	RPM	DIMENSIONS(mm)											KG
					D	B1	B2	B3	B4	B5	H1	H2	H3	L1	L2	
PTD100-25/2	100	25	11	3000	350	350	245	147	123	144	140	260	900	550	275	175
PTD100-27/2	100	27	11	3000	350	350	245	147	123	144	140	260	900	550	275	183
PTD100-32/2	100	32	15	3000	350	350	265	147	123	144	140	260	900	550	275	189
PTD100-33/2	100	33	15	3000	350	350	265	147	123	144	140	260	900	550	275	194
PTD100-40/2	100	40	18.5	3000	350	350	265	181	152	230	140	270	960	550	275	224
PTD100-48/2	100	48	22	3000	350	350	280	181	152	230	140	270	985	550	275	260
PTD100-52/2	130	52	30	3000	400	400	305	181	152	230	140	270	1060	550	275	318
PTD125-11/4	120	11	5.5	1500	200	260	208	216	176	230	215	228	873	620	310	166
PTD125-14/4	120	14	7.5	1500	200	330	208	216	176	230	215	228	873	620	310	179
PTD125-18/4	160	18	11	1500	350	330	255	211	177	230	215	276	989	800	400	257
PTD125-20/4	120	20	11	1500	350	330	255	236	208	230	215	276	1012	800	400	289
PTD125-22/4	160	22	15	1500	350	330	255	236	208	230	215	292	1047	800	400	302
PTD125-28/4	160	28	18.5	1500	350	330	255	236	208	230	215	292	1084	800	400	321
PTD125-32/4	160	32	22	1500	350	330	255	236	208	230	215	292	1122	800	400	356
PTD125-40/4	160	40	30	1500	400	400	310	272	248	230	215	315	1179	800	400	442
PTD125-48/4	160	48	37	1500	450	450	325	272	248	230	215	315	1204	800	400	495
PTD125-50/4	160	50	45	1500	450	450	325	272	248	230	215	315	1311	800	400	505
PTD150-12.5/4	200	12.5	11	1500	350	315	250	217	180	230	215	272	1003	800	400	275
PTD150-15/4	200	15	11	1500	350	315	250	217	180	230	215	272	1022	800	400	277
PTD150-17/4	200	17	15	1500	350	315	250	217	180	230	215	272	1045	800	400	278
PTD150-18/4	200	18	15	1500	350	315	250	217	180	230	215	272	1065	800	400	285
PTD150-20/4	220	20	18.5	1500	350	315	250	217	180	230	215	272	1079	800	400	300
PTD150-21/4	200	21	18.5	1500	350	360	275	217	180	230	215	272	1082	800	400	313
PTD150-25/4	200	25	22	1500	350	360	275	238	208	230	215	269	1099	800	400	354
PTD150-33/4	200	33	30	1500	400	400	305	238	208	230	215	269	1133	800	400	406
PTD150-40/4	200	40	37	1500	450	450	325	267	248	230	230	288	1192	900	450	511
PTD150-50/4	200	50	45	1500	450	450	325	267	248	230	230	288	1215	900	450	548
PTD200-12.5/4	400	12.5	22	1500	350	360	280	278	219	360	270	415	1300	1000	500	432
PTD200-15/4	300	15	18.5	1500	350	360	280	278	219	360	270	415	1262	1000	500	418
PTD200-18/4	300	18	22	1500	350	360	280	278	219	360	270	415	1300	1000	500	435
PTD200-20/4	400	20	30	1500	400	400	305	278	219	360	270	415	1334	1000	500	492
PTD200-23/4	400	23	37	1500	450	450	335	303	252	360	270	445	1389	1100	550	602
PTD200-24/4	300	24	30	1500	400	400	305	303	252	360	270	445	1334	1100	550	537
PTD200-27/4	400	27	45	1500	450	450	335	303	252	360	270	445	1412	1100	550	638
PTD200-30/4	300	30	37	1500	450	450	335	303	252	360	270	445	1389	1100	550	603
PTD200-32/4	400	32	55	1500	550	490	365	303	252	360	270	445	1488	1100	550	710
PTD200-35/4	300	35	45	1500	450	450	335	303	252	360	270	445	1412	1100	550	649
PTD200-43/4	400	43	75	1500	550	550	400	315	269	360	270	457	1556	1100	550	883
PTD200-44/4	300	44	55	1500	550	490	365	315	269	360	270	457	1500	1100	550	751
PTD200-50/4	400	50	90	1500	550	550	400	315	269	360	270	457	1607	1100	550	975
PTD200-53/4	300	53	75	1500	550	550	400	315	269	360	270	457	1556	1100	550	884
PTD250-12.5/4	630	12.5	30	1500	400	400	305	316	243	390	300	465	1414	1100	550	552
PTD250-14/4	630	14	37	1500	450	450	335	316	243	390	300	495	1469	1100	550	612
PTD250-15/4	500	15	30	1500	400	400	305	316	243	390	300	465	1414	1100	550	553
PTD250-17/4	530	17	45	1500	450	450	335	316	243	390	300	495	1492	1100	550	649
PTD250-18/4	500	18	37	1500	450	450	335	316	243	390	300	495	1469	1100	550	614
PTD250-20/4	630	20	55	1500	550	490	365	316	243	390	300	495	1568	1100	550	722
PTD250-21/4	500	21	45	1500	450	450	335	316	243	390	300	495	1492	1100	550	650
PTD250-26/4	630	26	75	1500	550	550	400	329	264	440	300	507	1636	1100	550	909
PTD250-27/4	500	27	55	1500	550	490	365	329	264	440	300	507	1580	1100	550	780
PTD250-32/4	630	32	90	1500	550	550	400	329	264	440	300	507	1687	1100	550	999
PTD250-36/4	500	36	75	1500	550	550	400	329	264	440	300	507	1636	1100	550	909
PTD250-40/4	630	40	110	1500	660	625	555	347	292	440	305	525	1840	1200	600	1389
PTD250-44/4	500	44	90	1500	550	550	400	347	292	440	305	485	1670	1200	600	1032
PTD250-50/4	630	50	132	1500	660	625	555	347	292	440	305	525	1990	1200	600	1473
PTD250-53/4	500	53	110	1500	660	625	555	347	292	440	305	525	1840	1200	600	1391



THE  
FOUNDATION  
OF LIFE

Zhejiang Happy Pump Industry Co.,Ltd  
www.happypump.com



# HPZ

## Stainless steel standard pump



HPZ 32-160/22

### Description

- ※ Stainless steel 304 standard pump design
- ※ All wetted parts are in stainless steel 304
- ※ Both square motor & round motor available
- ※ Stainless steel AISI 316 material as request
- ※ Back pull-out design without removing the pipes
- ※ Quality NSK bearing, wear resistance mechanical seal
- ※ Available to delivery some impure liquid

### Using Limits

- ※ Liquid temperature between -10℃ and +120℃
- ※ Ambient temperature between 0℃ and +50℃
- ※ Max.working pressure 16 bar/Continuous S1

### TECHNICAL DATA

50Hz n=2900 1/min

MODEL	DN (mm)	POWER		Q=DELIVERY																							
		kW	HP	Q(m³/h)	0	9	12	18	20	24	36	42	54	72	114	126	132	138	150	204	216	228	240				
				Q(L/min)	0	150	200	300	333	400	600	700	900	1200	1200	2100	2200	2300	2500	3400	3600	3800	4000				
HPZ 32-160/11	50×32	1.1	1.5		22.5	19.9	18.4	14.1	12																		
HPZ 32-160/15	50×32	1.5	2		29.5	26.5	24.5	19.2	17																		
HPZ 32-160/22	50×32	2.2	3		37	34	32	27	25																		
HPZ 32-200/30	50×32	3	4		44	40	37.5	31	28																		
HPZ 32-200/40	50×32	4	5.5		55	52	49.5	43.5	40.5	37																	
HPZ 32-200/55	50×32	5.5	7.5		70.5	67.5	65	58.5	55	51																	
HPZ 40-125/15	65×40	1.5	2		20		19	17.6	17	15.7	10.3	7															
HPZ 40-125/22	65×40	2.2	3		26.5		25.5	24	23.5	22	16.4	13															
HPZ 40-160/30	65×40	3	4		31		29.5	27.5	27	25.5	20	17															
HPZ 40-160/40	65×40	4	5.5		40		38.5	37	36	34.5	29	25.5															
HPZ 40-200/55	65×40	5.5	7.5		47		45.5	44	43	41	35	31															
HPZ 40-200/75	65×40	7.5	10		58		57	55.5	55	53.5	47.5	44															
HPZ 40-200/110	65×40	11	15		72		71	70	70	68.5	63	59															
HPZ 50-125/22	65×50	2.2	3		19					17.5	14.9	13.4	10.7														
HPZ 50-125/30	65×50	3	4		22					20.5	18.4	17	14.4	8													
HPZ 50-125/40	65×50	4	5.5		26.5					26	24	22.5	20.5	14													
HPZ 50-160/55	65×50	5.5	7.5		33					31	28.5	27	24.5	18													
HPZ 50-160/75	65×50	7.5	10		40					38.5	36	35	32.5	26													
HPZ 50-200/92	65×50	9.2	12.5		53					49	47.5	44.5	34														
HPZ 50-200/110	65×50	11	15		59					55	54	51	42														
HPZ 50-200/150	65×50	15	20		72					69	68	65	57														
HPZ 65-125/40	80×65	4	5.5		22.2					19.8	19	17.3	13.5	6.3													
HPZ 65-125/55	80×65	5.5	7.5		27					24	22.2	18.5	10.8	8													
HPZ 65-125/75	80×65	7.5	10		32					29.5	27.8	24	16.1	13.4	12												
HPZ 65-160/92	80×65	9.2	12.5		36.5					34.5	32.8	29	21.1	18.3	16.8												
HPZ 65-160/110	80×65	11	15		40.5					38.5	37.1	33.5	25.8	23	21.5	20											
HPZ 65-160/150	80×65	15	20		48					45.5	44	40.5	32.6	29.6	28	26.5											
HPZ 65-200/150	80×65	15	20		53.5					51	49	44.5	35.3	31.8	30												
HPZ 65-200/185	80×65	18.5	25		60.5					58.5	56.5	52	43	39.7	38	36.3											
HPZ 65-200/220	80×65	22	30		67					65.5	64	60	51	48	46.5	45											
HPZ 80-160/110	100×80	11	15		29								27.5	24.2	23	22.4	21.8	20.4	12.5								
HPZ 80-160/150	100×80	15	20		35								34.5	31.5	30.5	30	29.4	28.1	21	19.1	17						
HPZ 80-160/185	100×80	18.5	25		40								39.5	36.7	35.7	35.2	34.7	33.5	26.4	24.4	22.3	20					
HPZ 80-200/220	100×80	22	30		50								48.5	44.5	43	42	41	39	27.8	25							
HPZ 80-200/300	100×80	30	40		60								59	56	54.5	54	53	51	41.5	39	36.1	33					
HPZ 80-200/370	100×80	37	50		66								64	61	59.5	59	58	56.5	47	44.5	41.5	38.5					

# MS

## Centrifugal pump



MS60



MS250

### Application

It is applicable to household water supply, equipment support, pipeline pressurization, garden watering, vegetable greenhouse watering, fish farming and poultry raising, industrial and mining, water supply and drainage of enterprises and high-rise buildings, central air conditioner and centralized heating circulation system, etc.

### TECHNICAL DATA

50Hz n=2900 1/min

MODEL	POWER	Q=DELIVERY															
		Q(m³/h)	1.2	2.4	3.6	4.8	6.0	7.2	8.4	9.6	12	15	18	20	21	24	27
	kW	Q(L/min)	20	40	60	80	100	120	140	160	200	250	300	330	350	400	450
MS60/0.37	0.37		17.7	16.4	14.6	11.4											
MS60/0.55	0.55		22.7	21.3	19.5	16.2											
MS60/0.75	0.75		28.2	26.8	25	22											
MS100/0.55	0.55			17.8	16.7	15.4	14	12.2	9.9								
MS100/1.1	1.1			27.4	26.3	25	23.4	21.5	19.5	16.7							
MS160/0.75	0.75				15.5	15.3	15	14.8	14.3	13.8	12.5						
MS160/1.1	1.1				19.7	19.5	19.3	19.1	18.7	18.2	16.5						
MS250/1.1	1.1						15.8	15.6	15.4	15	14.3	13	11.5				
MS250/1.5	1.5						23.2	23	22.7	22.2	21.4	19.8	17.7				
MS250/2.2	2.2						28.2	27.8	27.5	27	26.2	24.6	22.6				
MS330/1.5	1.5							18.8	18.7	18.5	17.8	16.7	15	14	13.5	11.6	
MS330/2.2	2.2							22.5	22.2	22	21.5	20.3	18.7	17.5	16.8	14.8	12.3

# CDL

## Vertical multi-stage pump



### Application

- ※ Suitable for transferring liquids of low viscosity, non-inflammable and non-explosive, not containing solid particles or fibers
- ※ Water supply & drainage for high-rise buildings, filtration and transfer at waterworks, pressure boosting in main pipe
- ※ Washing and cleaning systems, boiler feeding, cooling water circulation, water treatment systems, auxiliary system, support equipment
- ※ Ultra-filtration systems, reverse-osmosis systems, distillation systems, separators, swimming pools
- ※ Agricultural irrigation: sprinkler irrigation, drip-feed irrigation
- ※ Food & beverage industry
- ※ Fire-fighting system



CDL3-132S2-2



CDL3-90L1-2

### TECHNICAL DATA

MODEL	kW	Q(m³/h)	0.4	0.6	0.8	1.0	1.2	1.4	1.6	1.8	2.0
CDL1-2	0.37	H	13	12.5	12	11.5	11	10.5	10	9.5	9
CDL1-3	0.37		19	18	17.5	17	16.5	16	15	14	12
CDL1-4	0.37		24	23.5	23	22.5	21.5	21	19	18	16
CDL1-5	0.37		30	29.6	29	28	27	26	24	22	20
CDL1-6	0.37		36	35.5	35	33.5	33	31	28	26	23
CDL1-7	0.37		42	41	40.5	39	38	36	33	30	27
CDL1-8	0.55		48	47	46	45	43	41	38	34	30
CDL1-9	0.55		54	53	52	51	49	46	43	39	33
CDL1-10	0.55		60	59	58	57	54	51	48	43	36
CDL1-11	0.55		66	65	63	61	59	56	52	47	40
CDL1-12	0.75		72	71	69	67	64	61	57	51	44
CDL1-13	0.75		78	77	75	73	69	66	62	55	47
CDL1-15	0.75		89	88	86	84	79	76	71	63	55
CDL1-17	1.1		101	99	97	95	89	86	80	71	62
CDL1-19	1.1		113	110	108	106	99	96	89	79	69
CDL1-21	1.1		124	122	120	117	110	106	98	87	75
CDL1-23	1.1		137	133	131	128	121	116	107	96	82
CDL1-25	1.5		149	145	143	139	131	126	116	104	89
CDL1-27	1.5		161	157	155	150	141	136	125	112	95
CDL1-30	1.5		178	175	171	166	157	150	139	124	106
CDL1-33	2.2		196	192	188	183	173	165	154	137	118
CDL1-36	2.2		214	210	205	200	190	181	169	151	130

### TECHNICAL DATA

MODEL	kW	Q(m³/h)	1	1.2	1.6	2.0	2.4	2.8	3.2	3.5
CDL2-2	0.37	H	18	17	16	15	13	12	10	8
CDL2-3	0.37		27	26	24	22	20	18	15	12
CDL2-4	0.55		36	35	33	30	26	24	20	16
CDL2-5	0.55		45	43	40	37	33	30	24	20
CDL2-6	0.75		53	53	50	45	40	36	30	24
CDL2-7	0.75		63	61	57	52	47	41	35	28
CDL2-9	1.1		80	78	73	67	61	54	45	37
CDL2-11	1.1		98	95	89	82	73	64	54	44
CDL2-13	1.5		116	114	106	98	89	78	65	52
CDL2-15	1.5		134	130	123	112	100	90	73	60
CDL2-18	2.2		161	157	148	136	121	108	91	76
CDL2-22	2.2		197	192	180	165	148	130	110	90
CDL2-26	3.0		232	228	214	198	179	158	130	110

TECHNICAL DATA

MODEL	kW	Q(m³/h)	1.2	1.6	2.0	2.4	2.8	3.0	3.2	3.6	4.0
CDL3-2	0.37	H	12.5	11.5	11	10.5	10	9	8	7	6
CDL3-3	0.37		19	18.5	17.5	16.5	15	14	13	11	9
CDL3-4	0.37		25	24	23	21.5	20	19	18	15	12
CDL3-5	0.37		31	30	29	27	25	23	22	19	16
CDL3-6	0.55		36	35	34	32	30	28	27	23	19
CDL3-7	0.55		43	41	39	37	34	32	31	27	22
CDL3-8	0.75		49	47	45	43	39	37	35	31	25
CDL3-9	0.75		55	53	51	48	45	42	40	35	28
CDL3-10	0.75		61	59	57	54	50	47	45	39	31
CDL3-11	1.1		67	64	61	58	54	51	49	42	34
CDL3-12	1.1		73	70	67	63	58	55	52	45	37
CDL3-13	1.1		78	76	73	69	64	60	57	49	40
CDL3-15	1.1		90	88	84	79	73	69	66	57	46
CDL3-17	1.5		103	100	96	90	83	79	75	64	52
CDL3-19	1.5		115	112	107	100	92	88	83	72	58
CDL3-21	2.2		128	124	119	112	102	98	91	79	64
CDL3-23	2.2		140	135	130	122	112	107	100	86	70
CDL3-25	2.2		151	147	141	131	122	116	109	94	76
CDL3-27	2.2		164	159	152	143	132	124	117	101	82
CDL3-29	2.2		175	170	163	153	142	133	126	109	88
CDL3-31	3.0		187	182	175	165	153	142	135	116	94
CDL3-33	3.0		199	194	187	176	163	151	145	125	100
CDL3-36	3.0		218	212	204	192	178	168	159	137	109

TECHNICAL DATA

MODEL	kW	Q(m³/h)	1.5	2.0	3.0	4.0	5.0	6.0	7.0
CDL4-2	0.37	H	19	18	17	15	13	10	8
CDL4-3	0.55		28	27	26	24	20	18	13
CDL4-4	0.75		38	36	34	32	27	24	19
CDL4-5	1.1		47	45	43	40	34	31	23
CDL4-6	1.1		56	54	52	48	41	37	28
CDL4-7	1.5		66	63	61	56	48	43	33
CDL4-8	1.5		74	72	70	64	55	50	38
CDL4-10	2.2		96	90	87	81	71	62	48
CDL4-12	2.2		114	108	104	95	85	75	58
CDL4-14	3.0		136	126	122	112	101	89	68
CDL4-16	3.0		152	144	140	129	115	101	78
CDL4-19	4.0		183	171	168	153	137	122	93
CDL4-22	4.0		211	200	192	178	160	138	108

TECHNICAL DATA

MODEL	kW	Q(m³/h)	1	2	3	4	5	6	7
CDL5-2	0.37	H	13	12	11	10	9	7	6
CDL5-3	0.55		19	19	18	16	15	12	10
CDL5-4	0.55		26	25	24	22	19	16	14
CDL5-5	0.75		33	32	30	28	24	22	18
CDL5-6	1.1		40	38	37	34	28	27	23
CDL5-7	1.1		46	45	42	40	32	32	27
CDL5-8	1.1		53	51	48	45	40	36	31
CDL5-9	1.5		60	59	56	53	47	44	37
CDL5-10	1.5		67	65	62	59	53	48	41
CDL5-11	2.2		74	73	70	66	59	54	47
CDL5-12	2.2		81	79	76	72	63	59	51
CDL5-13	2.2		88	85	82	78	68	64	55
CDL5-14	2.2		95	92	89	83	74	69	60
CDL5-15	2.2		101	99	95	89	79	74	63
CDL5-16	2.2		108	105	101	95	85	78	68
CDL5-18	3.0		122	119	115	109	98	90	78
CDL5-20	3.0		135	132	127	120	108	100	87
CDL5-22	4.0		150	147	142	134	120	112	91
CDL5-24	4.0		163	160	154	146	132	122	97
CDL5-26	4.0		176	173	166	157	145	132	106
CDL5-29	4.0		198	194	188	178	155	149	115
CDL5-32	5.5		214	208	198	189	170	154	131
CDL5-36	5.5		241	234	223	212	191	173	148

TECHNICAL DATA

MODEL	kW	Q(m³/h)	5	6	7	8	9	10	11	12
CDL8-2/1	0.75	H	10	9.5	9.3	9	8.5	8	7	6
CDL8-2	0.75		20	19.5	19	18	17	16	14	13
CDL8-3	1.1		30	29.5	28.5	27	25	24	21	19
CDL8-4	1.5		41	39.5	38	36	34	32	28	26
CDL8-5	2.2		52	50	48	45	42	40	36	32
CDL8-6	2.2		62	60	57	54	51	48	43	39
CDL8-8	3.0		83	80	77	73	69	65	58	52
CDL8-10	4.0		104	100	97	92	87	81	73	65
CDL8-12	4.0		124	120	116	111	104	92	87	78
CDL8-14	5.5		145	141	136	130	122	113	102	92
CDL8-16	5.5		166	161	156	148	139	130	118	106
CDL8-18	7.5		187	182	175	167	157	146	134	120
CDL8-20	7.5		208	202	195	186	175	163	150	135



TECHNICAL DATA

MODEL	kW	Q(m³/h)	5	6	8	10	12	14
CDL10-2/1	0.75	H	10.2	10	9	8	7	4.5
CDL10-2	0.75		21	20.5	19	16.5	13.5	9.5
CDL10-3	1.1		31.5	31	28.5	25.5	22	16.5
CDL10-4	1.5		42	41	38	34	29	22
CDL10-5	2.2		52.5	51	48	43	37	28
CDL10-6	2.2		63	62	58	52	44	34
CDL10-8	3.0		85	84	79	71	60	46
CDL10-10	4.0		107	105	98	89	76	58
CDL10-12	4.0		129	127	119	107	91	70
CDL10-14	5.5		151	148	139	125	106	82
CDL10-16	5.5		173	170	159	144	123	94
CDL10-18	7.5		195	191	180	163	141	108
CDL10-20	7.5		217	213	200	181	155	120

TECHNICAL DATA

MODEL	kW	Q(m³/h)	7	8	9	10	11	12	13	14	15	16
CDL12-2	1.5	H	23.5	23	22.5	22	21	20	18.5	17	15.5	14
CDL12-3	2.2		35.5	35	34	33	31.5	30	28	26	23.5	21
CDL12-4	3		47	46	45	44	42	40	37	34	31	28
CDL12-5	3		59.5	58	56.5	55	52.5	50	46.5	43	39	35
CDL12-6	4		71.5	70	68	66	63	60	56	52	47	42
CDL12-7	5.5		83.5	82	79.5	77	73.5	70	65.5	61	55	49
CDL12-8	5.5		95.5	94	91	88	84	80	75	70	63	56
CDL12-9	5.5		108	106	103	100	95.5	91	85	79	71.5	64
CDL12-10	7.5		120	118	114.5	111	106	101	94.5	88	80	72
CDL12-12	7.5		143.5	141	137	133	127	121	113.5	106	96	86
CDL12-14	11		168	165	160	155	148	141	132.5	124	112	100
CDL12-16	11		192.5	189	183.5	178	170	162	152	142	128.5	115
CDL12-18	11		217	213	207.5	202	192.5	183	171.5	160	145	130

TECHNICAL DATA

MODEL	kW	Q(m³/h)	8	10	12	14	16	18	20	22
CDL15-2	2.2	H	24.5	24	23.5	23	21.5	20	18	16
CDL15-3	3.0		37.5	37	36.5	35.5	34	32	29	25
CDL15-4	4.0		50.5	50	49	47.5	46	43	39	34
CDL15-5	5.5		63	62	61	59	57	53	48	42.5
CDL15-6	5.5		76	75	73	71	67	63	58	52
CDL15-7	7.5		89	88	86	83	79	74	68	61
CDL15-8	7.5		102	100	98	95	91	85	78	69
CDL15-10	11		128	126	124	121	115	115	98	87
CDL15-12	11		154	152	149	145	138	138	117	104
CDL15-14	15		180	177	173	168	160	160	136	122
CDL15-16	15		209	205	200	194	184	184	157	142
CDL15-17	15		222	218	213	206	196	196	167	151

TECHNICAL DATA

MODEL	kW	Q(m³/h)	8	10	12	14	16	18	20	22
CDL16-2	2.2	H	27	26	25	24	22	21	19	16
CDL16-3	3.0		41	40	38	37	34	32	29	25
CDL16-4	4.0		54	53	52	49	46	43	38	34
CDL16-5	5.5		68	67	65	62	58	54	48	43
CDL16-6	5.5		82	80	78	74	70	64	58	52
CDL16-7	7.5		96	95	91	87	82	76	68	61
CDL16-8	7.5		110	108	104	99	94	86	77	70
CDL16-10	11		138	136	131	125	118	109	97	87
CDL16-12	11		166	162	157	150	141	130	116	105
CDL16-14	15		194	190	184	175	166	152	136	122
CDL16-16	15		222	217	210	200	189	174	156	140

TECHNICAL DATA

MODEL	kW	Q(m³/h)	10	12	14	16	18	20	22	24	26	28
CDL20-1	1.1	H	13.5	13	12.5	12	11	10	9	8	7	6
CDL20-2	2.2		27	26.5	26	25	24	23	22	20	18	15
CDL20-3	4.0		40	39.5	39	38	37	35	33	30	27	24
CDL20-4	5.5		54	53	52	51	49	47	44	41	37	33
CDL20-5	5.5		67	66	64	62	60	58	55	50	45	40
CDL20-6	7.5		81	79	77	75	73	70	66	61	55	49
CDL20-7	7.5		95	93	91	89	86	82	77	71	65	58
CDL20-8	11		109	107	105	102	99	94	89	82	75	67
CDL20-10	11		136	134	131	128	124	118	111	103	95	85
CDL20-12	15		164	162	158	154	149	142	133	124	114	102
CDL20-14	15		192	189	185	180	174	166	156	145	133	119
CDL20-17	18.5		234	230	225	219	212	202	190	177	162	145

TECHNICAL DATA

MODEL	kW	Q(m³/h)	16	20	24	28	32	36	40
CDL32-10-1	1.5	H	14	13	12	11	9	7	4
CDL32-10	2.2		18	17	15	14	13	11	8
CDL32-20-2	3.0		29	28	26	23	20	16	11
CDL32-20	4.0		36	34	32	29	27	23	18
CDL32-30-2	5.5		47	44	41	38	33	28	21
CDL32-30	5.5		54	51	48	44	40	35	27
CDL32-40-2	7.5		65	62	58	53	46	40	30
CDL32-40	7.5		72	69	65	59	53	47	37
CDL32-50-2	11		83	79	74	68	60	52	41
CDL32-50	11		90	86	81	74	67	59	47
CDL32-60-2	11		101	97	90	83	74	65	51
CDL32-60	11		108	104	97	90	81	72	57
CDL32-70-2	15		119	114	107	98	88	78	60
CDL32-70	15		126	121	113	105	95	85	67
CDL32-80-2	15		136	131	123	114	102	90	71
CDL32-80	15		144	138	130	120	109	97	77

TECHNICAL DATA

MODEL	kW	Q(m³/h)	16	20	24	28	32	36	40
CDL32-90-2	18.5	H	154	148	140	129	117	102	82
CDL32-90	18.5		162	156	147	136	124	109	88
CDL32-100-2	18.5		175	166	157	146	131	115	91
CDL32-100	18.5		182	173	164	152	138	122	98
CDL32-110-2	22		193	184	173	164	146	128	102
CDL32-110	22		200	191	180	168	153	135	109
CDL32-120-2	22		211	201	189	178	160	140	113
CDL32-120	22		218	208	196	184	167	147	120
CDL32-130-2	30		230	218	206	193	174	153	124
CDL32-130	30		237	225	213	200	181	160	131
CDL32-140-2	30		247	235	222	210	189	165	135
CDL32-140	30		255	242	229	216	196	172	142
CDL32-150-2	30		266	253	239	224	203	178	145
CDL32-150	30		274	260	246	231	210	185	152
CDL32-160-2	30		284	270	255	240	218	190	156
CDL32-160	30		292	277	262	246	225	197	163

TECHNICAL DATA

MODEL	kW	Q(m³/h)	25	30	35	40	42	45	50	55
CDL45-10-1	3.0	H	20	19	18	17	16	15	13	11
CDL45-10	4.0		24	23	22	21	20	19	18	16
CDL45-20-2	5.5		40	38	36	33	32	30	27	23
CDL45-20	7.5		48	46	44	42	41	39	35	31
CDL45-30-2	11		63	61	58	54	52	50	44	38
CDL45-30	11		71	69	66	63	61	58	53	47
CDL45-40-2	15		87	84	80	75	73	69	62	54
CDL45-40	15		95	92	88	84	81	78	71	62
CDL45-50-2	18.5		111	107	102	96	93	88	80	69
CDL45-50	18.5		119	115	110	105	101	97	88	78
CDL45-60-2	22		135	130	124	117	113	108	97	85
CDL45-60	22		143	138	132	125	122	116	106	93
CDL45-70-2	30		158	152	146	138	134	127	115	100
CDL45-70	30		166	161	154	146	142	135	124	109
CDL45-80-2	30		182	175	168	159	154	146	133	116
CDL45-80	30		190	184	176	167	162	154	141	124
CDL45-90-2	30		205	198	190	180	174	166	150	132
CDL45-90	37		214	207	198	188	183	174	159	140
CDL45-100-2	37		230	221	212	200	194	185	168	147
CDL45-100	37		238	230	220	209	203	193	177	155
CDL45-110-2	45		255	246	236	223	217	206	188	165
CDL45-110	45		263	255	244	232	225	214	196	173
CDL45-120-2	45		280	270	259	245	238	226	206	181
CDL45-120	45		289	280	268	255	247	236	216	190
CDL45-130-2	45		305	294	282	267	259	247	225	198

TECHNICAL DATA

MODEL	kW	Q(m³/h)	30	40	50	60	65	70	80
CDL64-10-1	4.0	H	19	18	16	14	13	11	8
CDL64-10	5.5		27	25	23	21	20	18	15
CDL64-20-2	7.5		39	36	33	29	26	23	17
CDL64-20-1	11		46	44	40	36	33	30	24
CDL64-20	11		53	51	47	43	40	37	30
CDL64-30-2	15		66	62	56	50	46	41	32
CDL64-30-1	15		73	69	63	57	56	48	39
CDL64-30	18.5		80	76	70	64	60	55	46
CDL64-40-2	18.5		92	87	80	71	66	60	47
CDL64-40-1	22		100	94	87	78	73	67	54
CDL64-40	22		107	101	94	85	80	74	61
CDL64-50-2	30		121	114	105	95	88	80	64
CDL64-50-1	30		128	121	112	102	95	87	71
CDL64-50	30		136	129	119	109	102	94	78
CDL64-60-2	30		150	142	131	118	110	101	81
CDL64-60-1	37		157	149	138	125	117	108	88
CDL64-60	37		164	156	145	132	124	115	95
CDL64-70-2	37		179	169	156	141	132	121	99
CDL64-70-1	37		186	176	163	148	139	128	106
CDL64-70	45		193	183	170	155	146	135	112
CDL64-80-2	45		207	196	182	164	154	142	116
CDL64-80-1	45		215	203	189	171	161	149	123

TECHNICAL DATA

MODEL	kW	Q(m³/h)	50	60	70	80	85	90	100	110
CDL90-10-1	5.5	H	22	19	17	16	14	13	10	6
CDL90-10	7.5		25	24	22	21	20	19	16	12
CDL90-20-2	11		41	39	36	32	30	28	22	15
CDL90-20	15		53	50	47	44	41	40	36	30
CDL90-30-2	18.5		68	65	60	55	52	49	41	32
CDL90-30	22		81	77	72	67	64	62	55	48
CDL90-40-2	30		98	93	87	80	75	72	62	50
CDL90-40	30		110	105	100	92	86	84	76	66
CDL90-50-2	37		126	120	113	104	98	93	81	68
CDL90-50	37		139	131	124	115	110	106	94	83
CDL90-60-2	45		155	148	139	129	122	117	102	86
CDL90-60	45		168	160	150	141	134	130	117	103

TECHNICAL DATA

MODEL	kW	Q(m³/h)	60	70	80	90	100	110	120	130	140	150
CDL120-10	11	H	22	21.8	21.6	21	20.5	19.5	18.5	17	16	15
CDL120-20-2	15		34	33.6	33	31	30.2	30	28.5	27	25	24
CDL120-20-1	18.5		41	40	39.5	38.5	37	36.5	34.5	32.5	30	27.5
CDL120-20	22		46	45	44.5	43.5	42.4	41	40	38	36	33.5
CDL120-30-2	30		57	56	55	53.5	52	51	49	46.5	43.5	41
CDL120-30-1	30		64	63	62	60	58.5	57.5	55.5	52	49	46
CDL120-30	30		69.5	68.5	67.5	66	64.4	62.5	61	57.5	54.5	51
CDL120-40-2	37		80.5	79	78	76	73.5	72	69	66	61.5	58
CDL120-40-1	37		87	86	84.5	82	80	78	76	72	68	64.5
CDL120-40	45		92.5	91	90	88	85.5	83	81	77	73	68.5
CDL120-50-2	45		104.5	103	101	99	96	93	90	85.5	80.5	75.5
CDL120-50-1	45		110.5	109	107.5	105	102	100	97	92	86.5	83
CDL120-50	55		115.5	114	113	110	107.5	104.5	101.5	96	91	86
CDL120-60-2	55		128	125.5	123	121	117.3	113.5	110	104.5	98.5	92.5
CDL120-60-1	55		134	132	130.5	127	124	121	118	111	105	100
CDL120-60	75		139	137	135	132	128.8	126	123	116	110	104
CDL120-70-2	75		151	148	145.5	143	138.6	134	130	123.5	116.5	109
CDL120-70-1	75		156.5	154	152	148.5	144.5	141	137.5	130	123	116.5
CDL120-70	75		162.5	160.5	158.5	155	151	148	145	137	129	123

TECHNICAL DATA

MODEL	kW	Q(m³/h)	80	90	100	110	120	130	140	150	160	170	180
CDL150-10-1	11	H	18.3	17.8	17.3	17	16	15	14	12.5	11	10	8.5
CDL150-10	15		24	23	22.5	22	21.5	20.5	20	18.5	17	16	15
CDL150-20-2	18.5		37	35.5	34	33	32	31	29	27.5	26	23	21
CDL150-20-1	22		44.3	43	42	40	39	38.5	37.5	35	33	30	27
CDL150-20	30		50	49	48	47	45.5	44	42	40	37	34	32
CDL150-30-2	30		63.5	61	59	57.5	56	54.5	53	49	45.5	42	39
CDL150-30-1	37		70	68	67	65	63	62	60	56	53	49	45
CDL150-30	37		78	76.5	75	73	70.5	68	66	63	59	55	50.5
CDL150-40-2	45		89	87	84	81.5	79	77	74.5	70.5	65.5	60	56
CDL150-40-1	45		96.5	94	91.5	89	86.5	84	81.5	77	72.5	67	62
CDL150-40	55		104	102	100	97	95	91	88	84	79.5	74	68
CDL150-50-2	55		115.5	112	109	106	102.5	100	97	92	86	79	73.5
CDL150-50-1	75		122.5	119.5	117	113.5	111.5	107.5	104.5	99	93.5	87	80
CDL150-50	75		130	127.5	125	121	119	115	111.5	106.5	101	94.5	86.5
CDL150-60-2	75		140	137	133	130	126	121	118	112	106	95	91
CDL150-60-1	75		148.5	145	141.7	137.5	135	131	127	120.5	114.5	106.5	97.5
CDL150-60	75		157	153	149	145	142	139.5	137	130	123.5	116	109

TECHNICAL DATA

MODEL	kW	Q(m³/h)	100	120	140	160	180	200	220	240
CDL200-10-B	18.5	H	25.5	25	24	23	21.5	20	18	15.5
CDL200-10-A	22		29	28.5	27.5	26.5	25.5	24	22	20
CDL200-10	30		38.5	38	37.5	36.5	35	34	32.5	30
CDL200-20-2B	37		53	51	49	47	44	41	37	32
CDL200-20-2A	45		59.5	58	56	54	52.5	49	44.5	40.5
CDL200-20-A	55		69	68	66	64	62	59	55.5	51
CDL200-20	55		78.5	77.5	76	74	71.5	69	66	61.5
CDL200-30-2B	75		91.5	89	86.5	83.5	79	75	70	63
CDL200-30-A-B	75		95	93	90	87	83.5	79	73.5	67
CDL200-30-2A	75		99.5	97.5	94.5	91.5	89	84	78.5	72
CDL200-30-B	75		104.5	102.5	100	97	93	89	84.5	77.5
CDL200-30-A	75		108	106	103.5	100.5	97.5	93	88	81.5
CDL200-30	90		117.5	116	113.5	110.5	107	103	99	92
CDL200-40-2B	90		131.5	129	125.5	121	115.5	110	103.5	94
CDL200-40-2A	110		138.5	136	132	128	124	118	111	102.5
CDL200-40-A	110		148	145.5	142.5	138	134	128	122	113
CDL200-40	110		157.5	155.5	152.5	148	143.5	138	132.5	123.5



# WQ(D)-S

## Sewage Submersible pump



WQ(D)-S



### Description

WQ(D)-S stainless steel precision casting sewage submersible pump adopts a stainless steel precision casting shell, which has the characteristics of no pollution and corrosion resistance, expanding the application field of water supply and drainage; The impeller adopts a closed dual channel design with symmetrical channels, good balance, smooth operation, and low vibration, which increases the service life of the product. The flow channel has strong ability to pass through, and the measured efficiency is higher than the national standard, saving energy and reducing consumption.

The designed submersible motor has IP68 protection, F-class insulation, and good submersible cooling effect. The actual temperature rise is low, and the insulation life of the motor is long. An overcurrent protector is installed below 7.5kW to ensure that the motor can automatically cut off the power in case of abnormal conditions.

### Usage Conditions

- ※ Power supply: 50Hz, 60Hz, three-phase 380V;
- ※ The temperature of the medium is  $\leq 40^{\circ}\text{C}$  in liquid state, and the volume ratio of solid matter in the conveying medium is  $< 2\%$ , Medium density  $< 1200\text{kg/m}^3$ ;
- ※ During operation, the minimum liquid level should not be lower than 2/3 of the motor;
- ※ The diameter of the solid material in the medium shall not exceed the maximum allowable solid diameter.
- ※ The pH values of the conveying medium (temperature dependent) are 304 (4-10), 316 (4-13), and 316L (3-13) for reference only.

### Application Scope

- ※ Suitable for sewage treatment systems in construction projects, industrial and mining enterprises, municipal engineering, etc.
- ※ Sewage discharge, sewage relay, and sewage treatment in urban environmental protection systems;
- ※ Exploration and mining supporting equipment;
- ※ Discharge of sewage from food, medical, seawater suction, and cabin water accumulation;
- ※ Agricultural irrigation, rural biogas digesters, fish farming, fountains, water spraying, etc.



### TECHNICAL DATA

MODEL	Power (kW)	Voltage (V)	Flow (m³/h)	Lift (m)	Caliber (mm)	Speed (r/min)
50WQD10-10-0.75S	0.75	220	10	10	50	2850
65WQD15-6-0.75S	0.75	220	15	6	65	2850
50WQD7-15-1.1S	1.1	220	7	15	50	2850
65WQD20-6-1.1S	1.1	220	20	6	65	2850
50WQ10-10-0.75S	0.75	380	10	10	50	2850
65WQ15-6-0.75S	0.75	380	15	6	65	2850
50WQ7-15-1.1S	1.1	380	7	15	50	2850
65WQ20-6-1.1S	1.1	380	20	6	65	2850
50WQD15-15-1.5S(I)	1.5	220	15	15	50	2850
65WQD25-7-1.5S(I)	1.5	220	25	7	65	2850
50WQ15-15-1.5S(I)	1.5	380	15	15	50	2850
65WQ25-7-1.5S(I)	1.5	380	25	7	65	2850
50WQD15-15-1.5S	1.5	220	15	15	50	2850
65WQD25-7-1.5S	1.5	220	25	7	65	2850
50WQ15-15-1.5S	1.5	380	15	15	50	2850
65WQ25-7-1.5S	1.5	380	25	7	65	2850
50WQD15-20-2.2S	2.2	220	15	20	50	2850
65WQD25-15-2.2S	2.2	220	25	15	65	2850
80WQD40-9-2.2S	2.2	220	40	9	80	2850
100WQD50-7-2.2S	2.2	220	50	7	100	2850
50WQ15-20-2.2S(I)	2.2	380	15	20	50	2850
65WQ25-15-2.2S(I)	2.2	380	25	15	65	2850
80WQ40-9-2.2S(I)	2.2	380	40	9	80	2850
50WQ15-20-2.2S	2.2	380	15	20	50	2850
65WQ25-15-2.2S	2.2	380	25	15	65	2850
80WQ40-9-2.2S	2.2	380	40	9	80	2850
100WQ50-7-2.2S	2.2	380	50	7	100	2850
50WQ15-25-3S	3	380	15	25	50	2850
65WQ25-20-3S	3	380	25	20	65	2850
80WQ40-15-3S	3	380	40	15	80	2850
100WQ50-10-3S	3	380	50	10	100	2850
50WQ15-32-4S(I)	4	380	15	32	50	2900
65WQ25-25-4S(I)	4	380	25	25	65	2900
80WQ40-18-4S(I)	4	380	40	18	80	2900
100WQ50-15-4S(I)	4	380	50	15	100	2900

WQ(D)-S



TECHNICAL DATA

MODEL	Power (kW)	Voltage (V)	Flow (m³/h)	Lift (m)	Caliber (mm)	Speed (r/min)
50WQ15-32-4S	4	380	15	32	50	2900
65WQ25-25-4S	4	380	25	25	65	2900
80WQ40-18-4S	4	380	40	18	80	2900
100WQ50-15-4S	4	380	50	15	100	2900
50WQ15-40-5.5S	5.5	380	15	40	50	2900
65WQ30-25-5.5S	5.5	380	30	25	65	2900
80WQ50-18-5.5S	5.5	380	50	18	80	2900
100WQ80-10-5.5S	5.5	380	80	10	100	2900
150WQ100-8-5.5S	5.5	380	100	8	150	2900
50WQ20-40-7.5S(I)	7.5	380	20	40	50	2900
65WQ30-32-7.5S(I)	7.5	380	30	32	65	2900
80WQ45-22-7.5S(I)	7.5	380	45	22	80	2900
100WQ80-18-7.5S(I)	7.5	380	80	18	100	2900
150WQ100-10-7.5S(I)	7.5	380	100	10	150	2900
50WQ20-55-11S	11	380	20	55	50	2900
65WQ40-45-11S	11	380	40	45	65	2900
80WQ70-30-11S	11	380	70	30	80	2900
100WQ100-20-11S	11	380	100	20	100	2900
150WQ150-15-11S	11	380	150	15	150	2900
200WQ220-8-11S	11	380	220	8	200	2900
50WQ20-60-15S	15	380	20	60	50	2900
65WQ40-50-15S	15	380	40	50	65	2900
80WQ70-35-15S	15	380	70	35	80	2900
100WQ100-25-15S	15	380	100	25	100	2900
150WQ150-20-15S	15	380	150	20	150	2900
200WQ220-10-15S	15	380	220	10	200	2900
100WQ100-20-11S	11	380	100	20	100	1450
150WQ180-11-11S	11	380	180	11	150	1450
200WQ250-7-11S	11	380	250	7	200	1450
100WQ100-25-15S	15	380	100	25	100	1450
150WQ180-15-15S	15	380	180	15	150	1450
200WQ250-11-15S	15	380	250	11	200	1450
100WQ100-30-18.5S	18.5	380	100	30	100	1450
150WQ180-18-18.5S	18.5	380	180	18	150	1450
200WQ250-15-18.5S	18.5	380	250	15	200	1450



TECHNICAL DATA

MODEL	Power (kW)	Voltage (V)	Flow (m³/h)	Lift (m)	Caliber (mm)	Speed (r/min)
250WQ500-7-18.5S	18.5	380	500	7	250	1450
100WQ100-35-22S	22	380	100	35	100	1450
150WQ200-20-22S	22	380	200	20	150	1450
200WQ300-16-22S	22	380	300	16	200	1450
250WQ500-9-22S	22	380	500	9	250	1450
100WQ100-45-30S	30	380	100	45	100	1450
150WQ180-30-30S	30	380	180	30	150	1450
200WQ250-22-30S	30	380	250	22	200	1450
250WQ600-9-30S	30	380	600	9	250	1450
300WQ800-7-30S	30	380	800	7	300	1450
100WQ100-50-37S	37	380	100	50	100	1450
150WQ200-30-37S	37	380	200	30	150	1450
200WQ350-25-37S	37	380	350	25	200	1450
250WQ600-12-37S	37	380	600	12	250	1450
300WQ800-9-37S	37	380	800	9	300	1450
350WQ1000-6-37S	37	380	1000	6	350	1450
100WQ100-55-45S	45	380	100	55	100	1450
150WQ200-35-45S	45	380	200	35	150	1450
200WQ400-25-45S	45	380	400	25	200	1450
250WQ600-15-45S	45	380	600	15	250	1450
300WQ800-12-45S	45	380	800	12	300	1450
350WQ1000-8-45S	45	380	1000	8	350	1450
100WQ100-65-55S	55	380	100	65	100	1450
150WQ180-50-55S	55	380	180	50	150	1450
200WQ300-40-55S	55	380	300	40	200	1450
200WQ400-30-55S	55	380	400	30	200	1450
250WQ600-20-55S	55	380	600	20	250	1450
300WQ800-15-55S	55	380	800	15	300	1450
350WQ1000-10-55S	55	380	1000	10	350	1450
150WQ200-60-75S	75	380	200	60	150	1450
200WQ300-45-75S	75	380	300	45	200	1450
250WQ600-25-75S	75	380	600	25	250	1450
300WQ800-20-75S	75	380	800	20	300	1450
350WQ1000-15-75S	75	380	1000	15	350	1450
400WQ1300-13-75S	75	380	1300	13	400	1450



# WQ(D)-S



## TECHNICAL DATA

MODEL	Power (kW)	Voltage (V)	Flow (m³/h)	Lift (m)	Caliber (mm)	Speed (r/min)
150WQ200-65-90S	90	380	200	65	150	1450
200WQ300-55-90S	90	380	300	55	200	1450
250WQ600-30-90S	90	380	600	30	250	1450
300WQ800-25-90S	90	380	800	25	300	1450
350WQ1000-18-90S	90	380	1000	18	350	1450
400WQ1300-16-90S	90	380	1300	16	400	1450
150WQ200-75-110S	110	380	200	75	150	1450
200WQ400-55-110S	110	380	400	55	200	1450
250WQ600-40-110S	110	380	600	40	250	1450
300WQ800-30-110S	110	380	800	30	300	1450
350WQ1000-22-110S	110	380	1000	22	350	1450
400WQ1500-17-110S	110	380	1500	17	400	1450
150WQ200-80-132S	132	380	200	80	150	1450
200WQ400-60-132S	132	380	400	60	200	1450
250WQ600-50-132S	132	380	600	50	250	1450
300WQ800-35-132S	132	380	800	35	300	1450
350WQ1000-28-132S	132	380	1000	28	350	1450
400WQ1700-16-132S	132	380	1700	16	400	1450
250WQ600-60-160S	160	380	600	60	250	1450
300WQ800-40-160S	160	380	800	40	300	1450
350WQ1000-35-160S	160	380	1000	35	350	1450
400WQ1600-20-160S	160	380	1600	20	400	1450
500WQ2000-16-160S	160	380	2000	16	500	1450
250WQ600-70-185S	185	380	600	70	250	1450
300WQ900-40-185S	185	380	900	40	300	1450
350WQ1100-38-185S	185	380	1100	38	350	1450
400WQ1600-25-185S	185	380	1600	25	400	1450
500WQ2200-15-185S	185	380	2200	15	500	1450
250WQ750-75-200S	200	380	750	75	250	1450
300WQ1000-45-200S	200	380	1000	45	300	1450
350WQ1300-35-200S	200	380	1300	35	350	1450
400WQ1600-27-200S	200	380	1600	27	400	1450
500WQ2500-15-200S	200	380	2500	15	500	1450
300WQ1200-45-250S	250	380	1200	45	300	1450
350WQ1500-36-250S	250	380	1500	36	350	1450
400WQ1600-30-250S	250	380	1600	30	400	1450
500WQ2800-15-250S	250	380	2800	15	500	1450

## NOTE

[illegible]